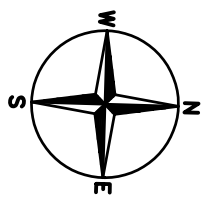
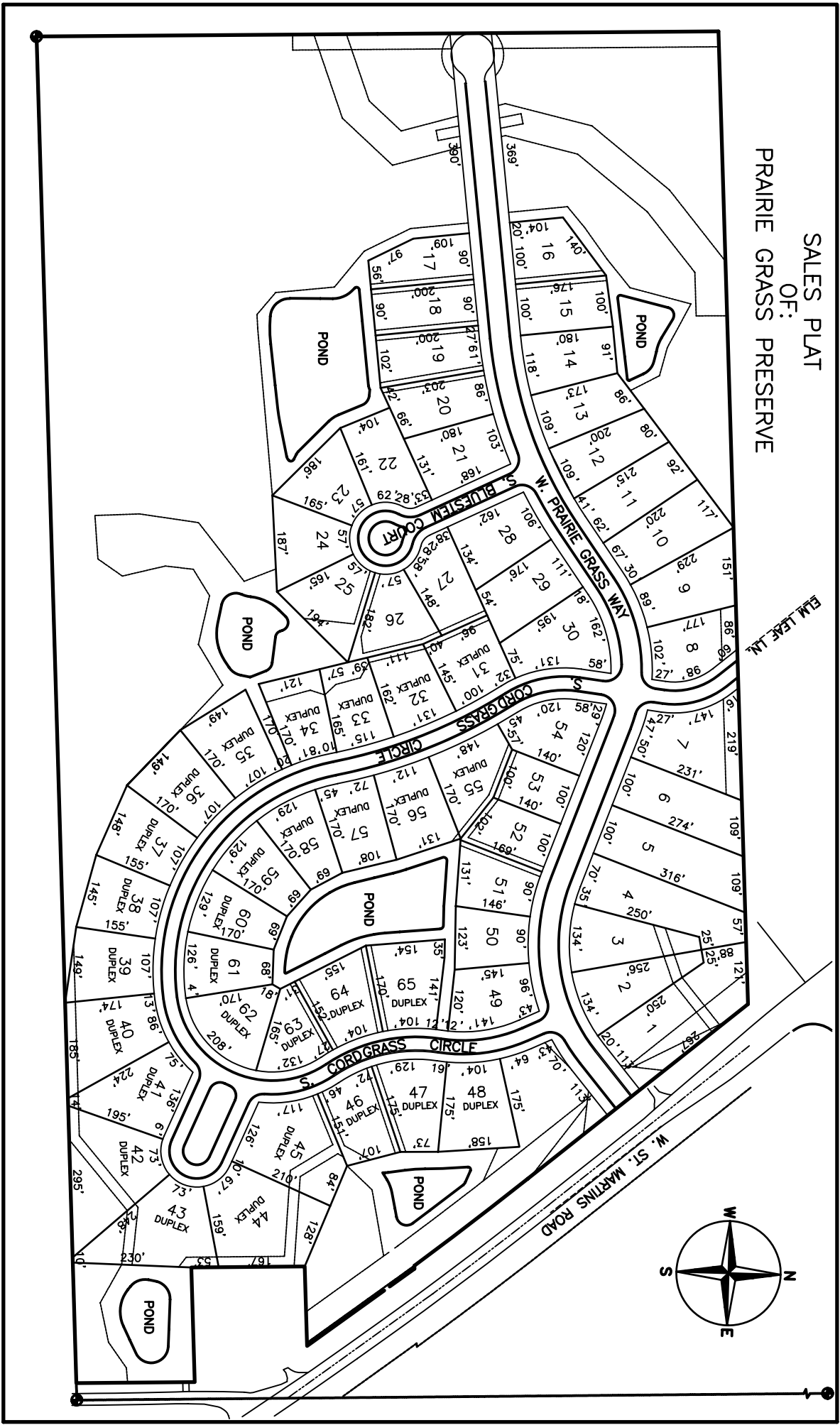


SALES PLAT
OF:
PRAIRIE GRASS PRESERVE



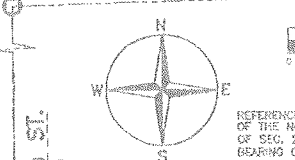
PRAIRIE GRASS PRESERVE

A RE-DIVISION OF CERTIFIED SURVEY MAP NUMBER 6462, AND UNPLATTED LANDS IN THE SOUTHWEST QUARTER (SW 1/4) AND THE SOUTHEAST QUARTER (SE 1/4) OF THE NORTHEAST QUARTER (NE 1/4) OF SECTION 20, TOWN 5 NORTH, RANGE 21 EAST IN THE CITY OF FRANKLIN, MILWAUKEE COUNTY, WISCONSIN.

NOTE: THIS FINAL PLAT IS SUBJECT TO A DECLARATION OF DEED RESTRICTIONS, CONSERVATION AGREEMENT AND PROTECTIVE COVENANTS WHICH IS AN EXHIBIT TO THIS PLAT

NORTHEAST CORNER OF THE NORTHEAST QUARTER (NE 1/4) SEC. 20-5-21
CONC. MON. W/ BRASS CAP - FOUND
N 329,542.56
E 2,528,011.63

NORTHWEST CORNER OF THE NORTHEAST QUARTER (NE 1/4) SEC. 20-5-21
CONC. MON. W/ BRASS CAP - FOUND
N 329,480.14
E 2,528,399.71



GRAPHIC SCALE
SCALE: 1" = 100'
REFERENCE BEARING IS THE EAST LINE OF THE NORTHEAST QUARTER (NE 1/4) OF SEC. 20-5-21 WITH AN ASSUMED BEARING OF S 00°30'51" E.

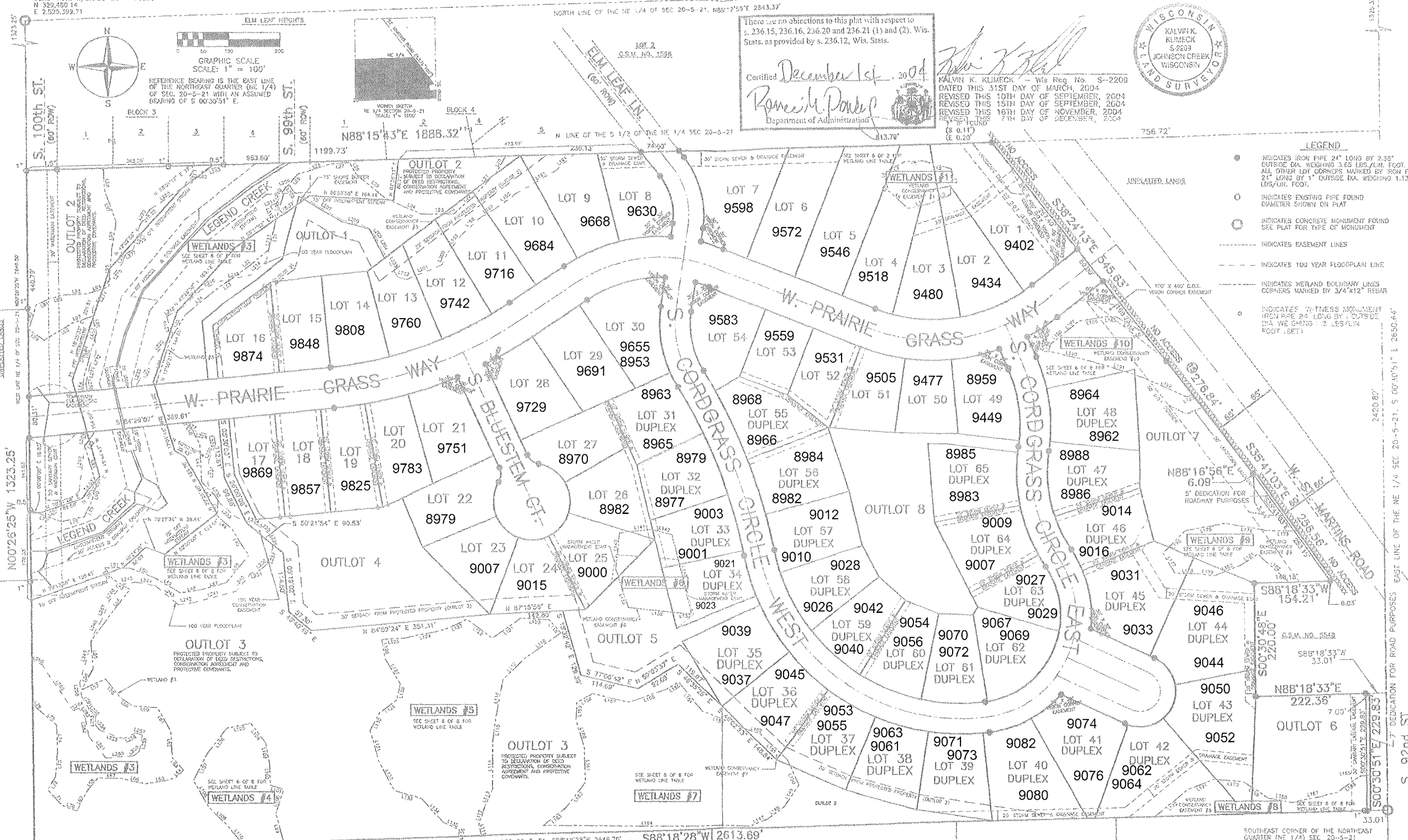
There are no objections to this plat with respect to s. 236.15, 236.16, 236.20 and 236.21 (1) and (2), Wis. Stats. as provided by s. 236.12, Wis. Stats.

Certified December 1st, 2004
Romeo M. Powell
Department of Administration

KALVIN K. KLIMECK - Wis Reg. No. S-2209
DATED THIS 31ST DAY OF MARCH, 2004
REVISED THIS 19TH DAY OF SEPTEMBER, 2004
REVISED THIS 15TH DAY OF SEPTEMBER, 2004
REVISED THIS 16TH DAY OF NOVEMBER, 2004
REVISED THIS 7TH DAY OF DECEMBER, 2004



- LEGEND**
- INDICATES IRON PIPE 24" LONG BY 2.58" OUTSIDE DIA. WEIGHING 3.65 LBS./LIN. FOOT. ALL OTHER LOT CORNERS MARKED BY IRON PIPE 24" LONG BY 1" OUTSIDE DIA. WEIGHING 1.13 LBS./LIN. FOOT.
 - INDICATES EXISTING PIPE FOUND DIAMETER SHOWN ON PLAT
 - INDICATES CONCRETE MONUMENT FOUND SEE PLAT FOR TYPE OF MONUMENT
 - INDICATES EASEMENT LINES
 - - - - - INDICATES 100 YEAR FLOODPLAIN LINE
 - - - - - INDICATES WETLAND BOUNDARY LINES CORNERS MARKED BY 3/4"x12" REBAR
 - INDICATES WETNESS MONUMENT (IRON PIPE 24" LONG BY 1" OUTSIDE DIA. WEIGHING 1.13 LBS./LIN. FOOT. (SET))

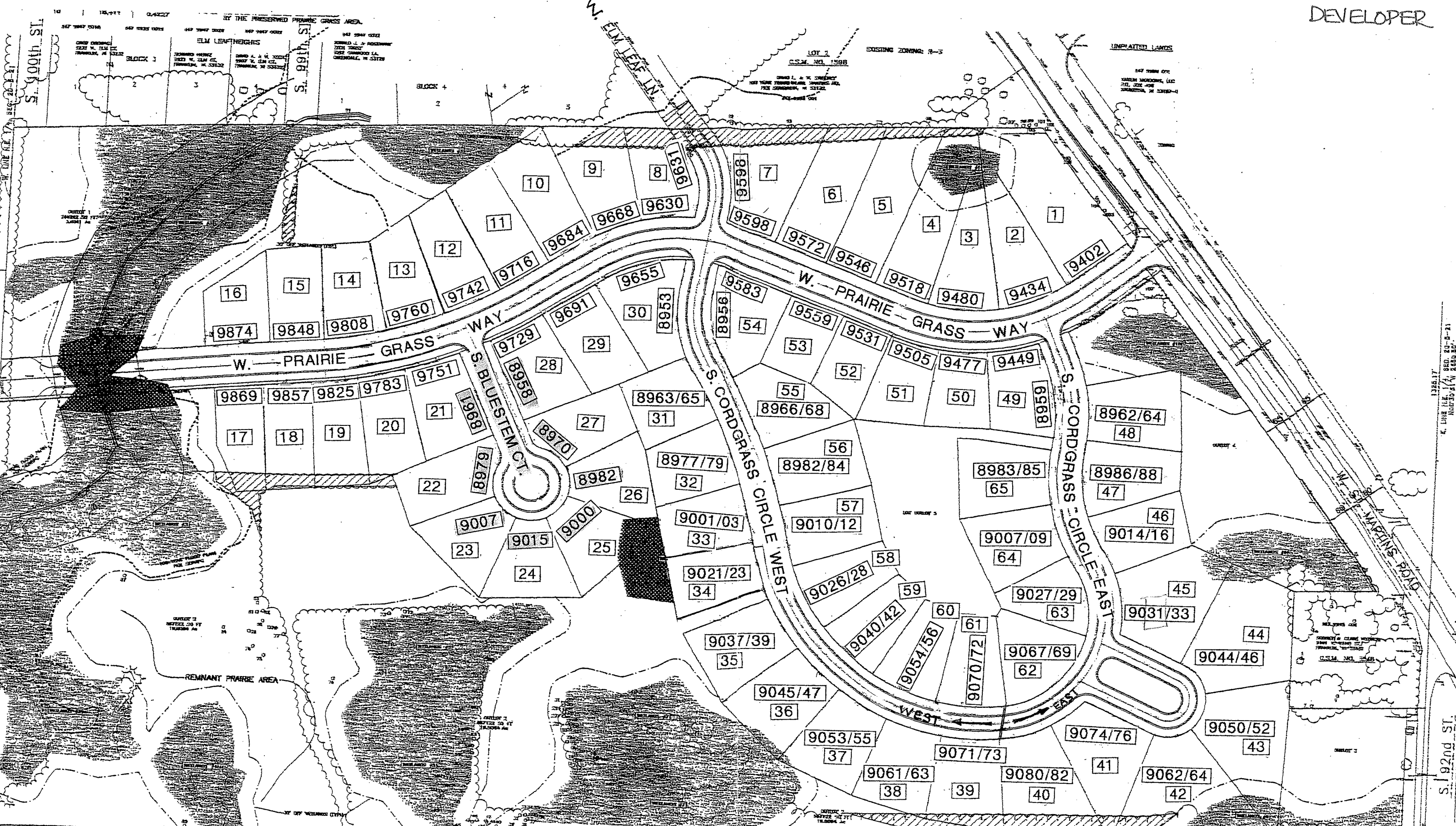


SOUTH-WEST CORNER OF THE NORTHEAST QUARTER (NE 1/4) SEC. 20-5-21
CONC. MON. W/ CAST IRON PLUG - FOUND
N 326,813.79
E 2,528,420.23

PIONEER ENGINEERING AND SURVEYING, L.L.C.
CONSULTANTS IN SURVEYING AND COMMERCIAL DEVELOPMENTS
3802 C.T.H. "B" JOHNSON CREEK, WI 53038
(262) 869-3330 FAX: 869-3332

SOUTHEAST CORNER OF THE NORTHEAST QUARTER (NE 1/4) SEC. 20-5-21
CONC. MON. W/ CAST IRON PLUG - FOUND
N 326,892.05
E 2,528,055.47

DEVELOPER



PRAIRIE GRASS PRESERVE REVISED 1/25/05

EAST/WEST DIVISION LINE CORRECTED ON CORDGRASS CIRCLE

1/4 OF
21-5-21
Brown Copy

S.E. CORNER
N.E. 1/4 OF
21-5-21
(Brown Copy)

1226.17
S. 192nd St. 1/4 SEC. 20-5-21
North 30° 51' 40" East 80'